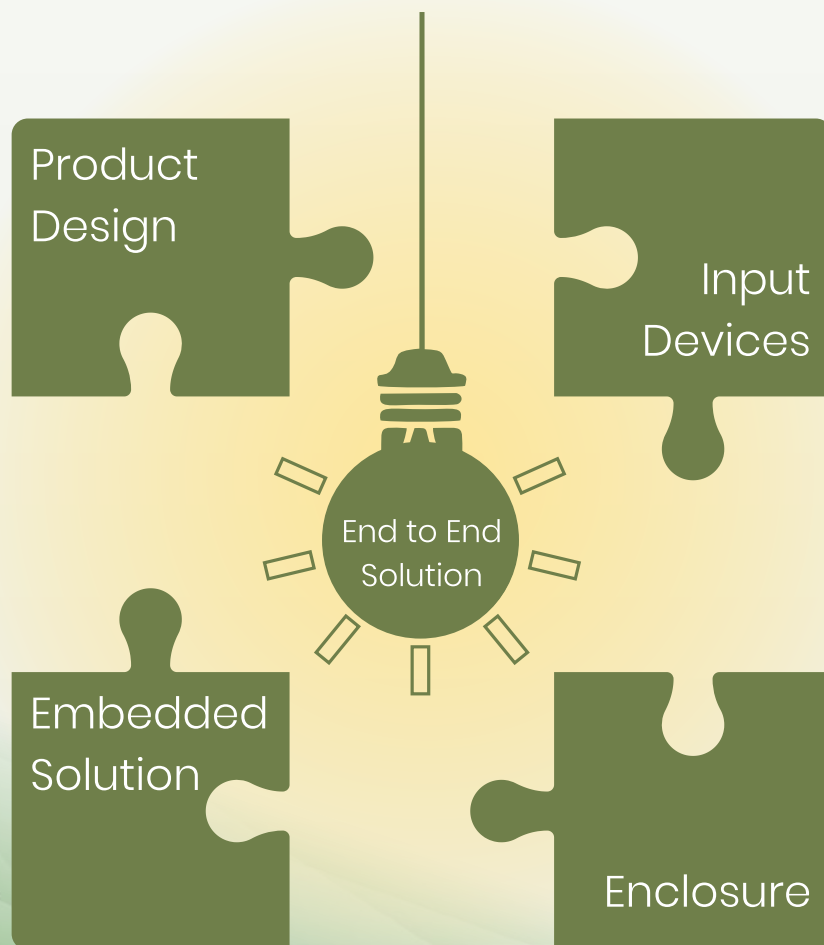


## Advance Input Devices for Defence Products



Advance Input Devices,  
Functional Printed Electronics &  
Touch Electrical Switches.

## Keetronics (India) Pvt. Ltd.

Keetronics (India) Pvt., Ltd. is a leading company of manufacturing Advance Input Devices like Membrane Keyboards, Customised Computer Compatible Keyboards, Functional Printed Electronics and 'Touchmatik' Touch Electrical Switches, with a dedicated, skilled and dynamic Research & Engineering team. We have completed several critical and innovative projects with extensive testing of our products.

Since 1994, Keetronics has earned an enviable reputation for the design and manufacturing advance input devices providing the highest quality and reliability for various diverse applications.

Our 360-degree approach with the promise of customer satisfaction has always kept us ahead.



## Keetronics (India) Pvt. Ltd.



With exceptionally talented and experienced team with a collective experience of more than 28 years, Keetronics is qualified to meet the challenges of the Defence sector and provide end to end solutions for the user interface required for the products required in the battle field.

An ISO 9001: 2015 approved company, we main to provide solution to your input device requirements in a stipulated time frame and in budget that meets your expectations.

## How we can help you...

With our experts in the field of designing and developing highly reliable and consistent quality advance input devices, with a experience of more than 28 years and having being developed more than 55 products for critical defense requirements, we can offer technically competent & cost effective solutions.

## Following is the special assistance we can offer for a reliable input device

- ⇒ A correct key pitch to avoid accidental press.
- ⇒ Better tactile feel while using gloves in emergency situation.
- ⇒ Aesthetic appeal and light colours to get consistency and convey the right meaning.
- ⇒ Optimised pressure for a key contact without applying unnecessary force.
- ⇒ Illuminated user interface for easy accessibility in darkness.
- ⇒ 3D keys for crisp tactile feel and advantage of blind operations.
- ⇒ Highly reliable contacts using gold plated switches and PCB's.
- ⇒ Ruggedness using Steel keyboards for vandal proof applications.
- ⇒ Right use of overlays material and adhesives to prevent them from abuse related -  
- to Ultra Violet rays in the field

Our products in the Defence sector comply with stringent standards from PCB designing & soldering of components till product assembly.

With this aspect, utmost care is taken and testing at different levels of product execution is carried out by our product managers and experts.



## Embedded Solutions

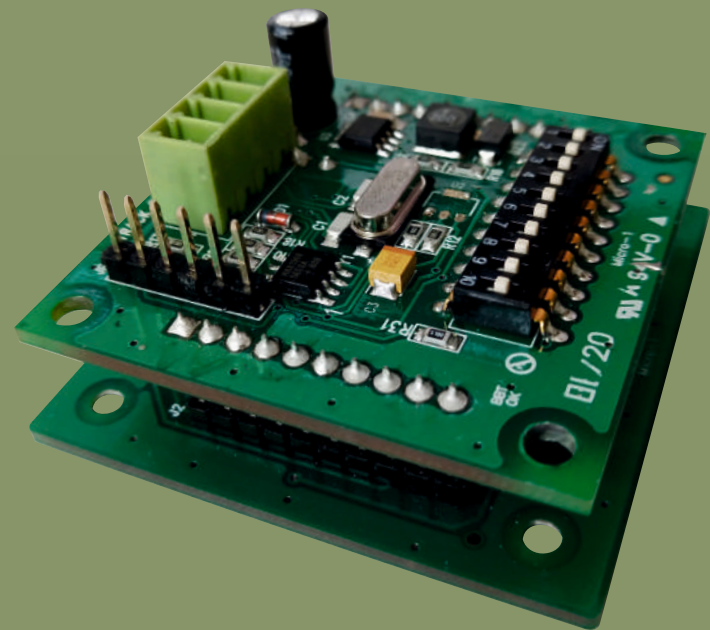
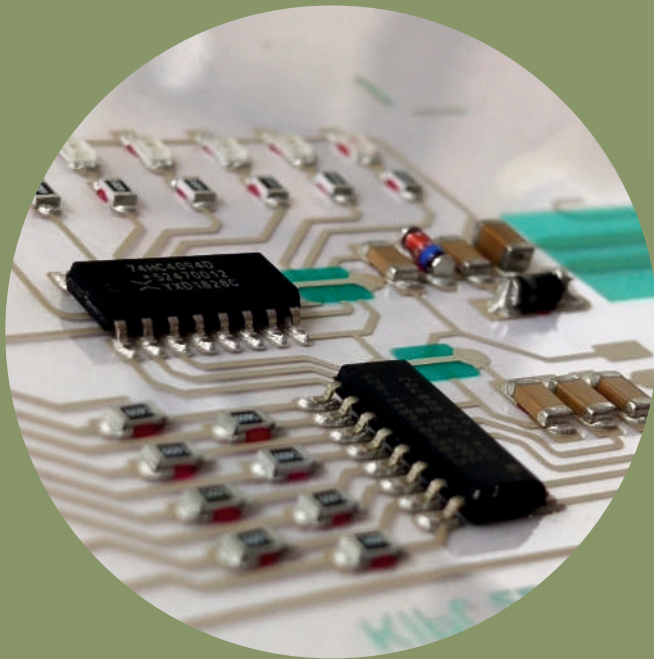
Embedded systems control many automation devices that are commonly used today. Embedded technology provides the optimisation of size reduction with a cost-effective solution offering highly reliable product quality.

It allows the designs of highly intelligent techniques to meet its applications beyond expectations. We at Keetronics provide services with our unique approach for providing end to end solutions under a single roof.

We offer firmware developments and designs with various peripheral aspects of:

- ⇒ Serial Communication Interfaces (SCI) : RS-232, RS-422, RS-485, etc.
- ⇒ Synchronous Serial Communication Interface : I2C & SPI.

We cater to the flexible needs of customers building a strong relationship.



## End to End Solutions...



Keyboards



Embedded Solutions



Enclosures

Man Machine Interface, a product that offers functional as well as Aesthetic superiority with global quality standards at competitive prices.

Understanding the need of a reliable and dependable service provider, We have a well experienced team catering the hardware and software needs of your project. Offering the Serial interface Communication protocols viz RS485 / i2C /TTL / Rs232

Understanding the implications of the Business process requirements, we support the best enclosures w.r.t. product designs and applications.

## Defence Project Executions



Bharat Electronics Ltd. - Bulk Encryption Unit



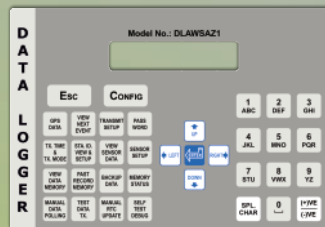
L & T Defence



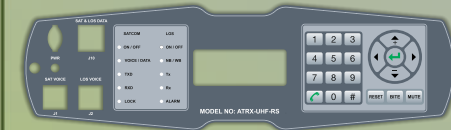
Symtronics Automation



Navigator Technical Services



Komoline Aerospace - Weather Monitoring



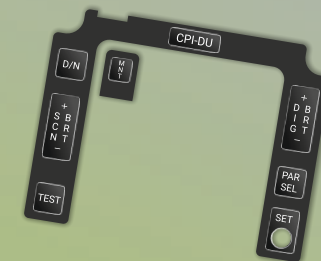
Avantel Limited - Wireless Radios



Green Connect - Desktop Audio Console



Bit Mapper - Advanced VLF Demodulator



ComAvia Systems Technologies - CPIDU UNIT



TATA Advanced System



Akshay Embedded System



ARI Simulation - Radar Panel

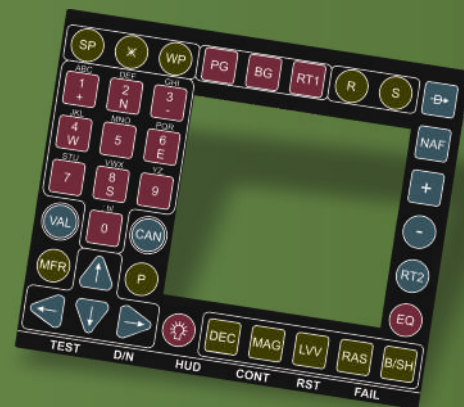
## Highlights



INS Vikrant - Telephone Keypad



Tejas Fighter - HAL Keypad

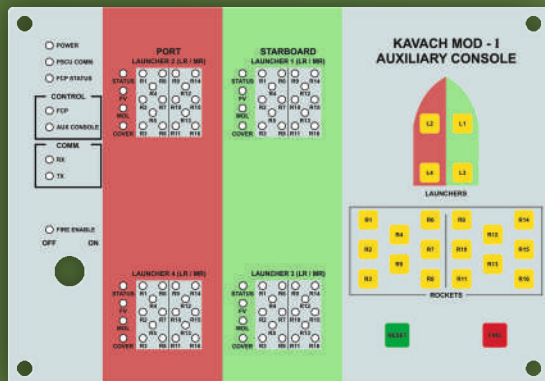




## ARI Simulation - Bridge Simulator



## EON - Fire Control System



## Product Portfolio...

- ⇒ Membrane Keyboards
- ⇒ Short Travel Keyboards
- ⇒ Vandal-Proof Keyboards
- ⇒ Long Travel Keyboards
- ⇒ Silicon Rubber Keypad
- ⇒ Duraswitch Keyboards
- ⇒ Standard Matrix Keyboards
- ⇒ User Programmable Computer Keyboards
- ⇒ Freely Programmable or Customised Decoders
- ⇒ Customised Computer Compatible Keyboards
- ⇒ Capacitive Keyboards
- ⇒ 3D Keys Keyboards
- ⇒ Illuminated Keyboards
- ⇒ PIEZO-electrical switches
- ⇒ Epoxy Foam Keyboards
- ⇒ Functional Printed Electronics



Users...



सी डैक  
CDAC

TATA  
ADVANCED SYSTEMS



L&T Defence

भारत इलेक्ट्रॉनिक्स  
BHARAT ELECTRONICS

SYMTRONICS

इका एन सी

AVANTEL

KRYSTALVISION™

DELOPT  
INSPIRED TO INNOVATE

ComAvia  
SYSTEMS TECHNOLOGIES

Eon Infotech Limited  
Embedded Product Engineering Solutions

'Kee' crew behind quality & service...

TRULY  
भारत में निर्मित  MADE IN INDIA



Mrs. Mrunal Kulkarni  
Director  
(Associated, Since 1998)



Mrs. Deepa Shaha  
Head Operations  
(Associated, Since 1998)



Mrs. Anuja Deshpande  
Mgr. Design & Development  
(Associated, Since 1994)



Mrs. Swati Gokhale  
Assistant Manager QMS & Design  
(Associated, Since 2005)



Mrs. Shreya Kavishwar  
Manager Production  
(Associated, Since 1994)



Mrs. Kanchan Bhide  
Manager Accounts & Finance  
(Associated, Since 1999)



Mrs. Sonali Nagarkar  
Manager Accounts & Finance  
(Associated, Since 2003)



Mrs. Vasumati Thopte  
Printing Incharge  
(Associated, Since 2005)



Mrs. Mukul Shetty  
Divisional Head - TES  
(Associated, Since 2005)



Mr. Sanjay Pol  
Sr. Technician  
(Associated, Since 2005)



Mr. Rajesh Thorat  
Dispatch Assistant  
(Associated, Since 2008)



Mr. Sandip Kabdule  
Supervisor - Assembly  
(Associated, Since 2008)



Mr. Mangesh Puranik  
Sr. PCB Designer  
(Associated, Since 2012)



Mr. Yogesh Adhikari  
Quality Head  
(Associated, Since 2010)



Mrs. Neha Anchalkar  
Sr. Sales Office  
(Associated, Since 2017)



Mrs. Priyanka Dandekar  
Senior Executive HR & Admin  
(Associated, Since 2017)



Mr. Vishwas Heman  
Sr. Graphic Designer  
(Associated, Since 2018)



Mr. Shivprasad Biradar  
Design Engineer  
(Associated, Since 2018)



Mrs. Shubhange Deshpande  
Sr. HR & Admin Executive  
(Associated, Since 2019)



Mrs. Sunanda Shindekar  
Assistant Head Operations  
(Associated, Since 2019)

OCT 2022, ISSUE: 02



020 - 6725 7114 , 113 , 112



enquiry@keetronics.com



www.keetronics.com



'Devgiri', Kothrud Ind. Estate, Nr.Karishma Soc., Kothrud, Pune: 411 038, India.